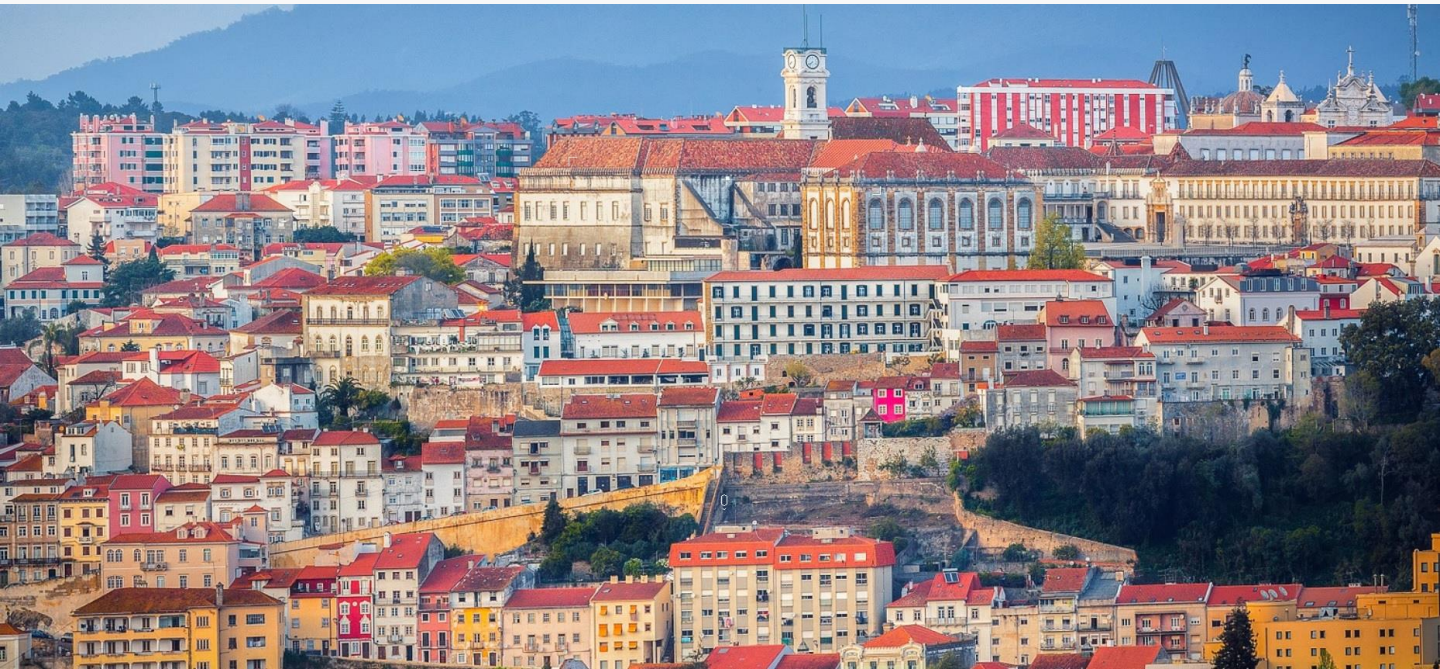




# 8<sup>th</sup> European Synapse Meeting Coimbra 20-21 October 2022



## SPONSOR INFORMATION

# WHAT

## 8<sup>th</sup> European Synapse Meeting



# WHEN

October, 20-21, 2022

# WHERE

Convento de São Francisco  
Coimbra, Portugal

# OVERVIEW

The CNC-Center for Neuroscience and Cell Biology - University of Coimbra and the IMM-Institute of Molecular Medicine - University of Lisbon are proud to organize the **8th European Synapse Meeting – ESM-Coimbra2022**, which will be held at the **Convento São Francisco - Convention Center**, in Coimbra, in **October 20-21, 2022**.

The aim of ESM-Coimbra2022 is to bring together, in a stimulating environment, junior and senior neuroscientists working on synapses and to provide a forum for lively discussions and new directions, as well as to promote the free exchange of information and ideas in synapse research. This serves to create a European research community with an active role in promoting synaptic research and its funding, within the EU.

Based on previous events, ESM-Coimbra2022 expects to attract about **200 participants**, from within and outside the EU.

We strongly believe that ESM-Coimbra2022 is an excellent opportunity to publicize your brands/products and we would like to count on your support to organize this event.

We are open to discuss the forms of support that best fit the characteristics of your brands/products. A commercial area will be made available, with wide visibility, where you can present your products/brands during the congress. The program also includes a period dedicated to short presentations by delegates of companies that highly collaborate in the event.

We trust you will find this meeting an attractive opportunity to increase the visibility of your company and will look forward to hearing from you.

# WHY SPONSOR

**Meet** a unique community of neuroscientists

High degree of **interaction** with all participants

(Poster sessions, coffee breaks and lunches are located in the same area of the industrial exhibition)

**Persuade** the participants on the excellence of your products

**Show** your company on the meeting App  
(1000 characters to describe your company)

**Understand** market trends and needs

**Network** with potential new costumers

# ORGANIZERS



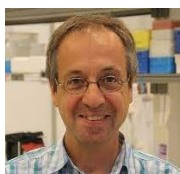
## Ana Luisa Carvalho

Center for Neuroscience and Cell Biology  
Department of Life Science  
University of Coimbra  
✉ [alc@cnc.uc.pt](mailto:alc@cnc.uc.pt)



## Ana Sebastião

Institute of Molecular Medicine  
Faculty of Medicine  
University of Lisbon  
✉ [anaseb@medicina.ulisboa.pt](mailto:anaseb@medicina.ulisboa.pt)



## Carlos Duarte

Center for Neuroscience and Cell Biology  
Department of Life Science  
University of Coimbra  
✉ [cbduarte@ci.uc.pt](mailto:cbduarte@ci.uc.pt)



## Ira Milosevic

Multidisciplinary Institute of Ageing  
University of Coimbra  
✉ [ira.milosevic@fmed.uc.pt](mailto:ira.milosevic@fmed.uc.pt)



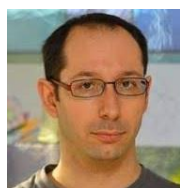
## João Peça

Center for Neuroscience and Cell Biology  
Department of Life Science  
University of Coimbra  
✉ [jpeca@cnc.uc.pt](mailto:jpeca@cnc.uc.pt)



## Luisa Cortes

Center for Neuroscience and Cell Biology  
Institute for Interdisciplinary Research  
University of Coimbra  
✉ [lcortes@cnc.uc.pt](mailto:lcortes@cnc.uc.pt)



## Paulo Pinheiro

Center for Neuroscience and Cell Biology  
Institute for Interdisciplinary Research  
University of Coimbra  
✉ [pinheiro@cnc.uc.pt](mailto:pinheiro@cnc.uc.pt)



## Raquel Rodrigues

Center for Neuroscience and Cell Biology  
Institute for Interdisciplinary Research  
University of Coimbra  
✉ [raquel.rodrigues@cnc.uc.pt](mailto:raquel.rodrigues@cnc.uc.pt)

# KEYNOTE SPEAKERS



## Reinhard Jahn

Dept. of Neurobiology  
Max Planck Institute for  
Multidisciplinary Sciences  
Germany



## Gordon Fishell

Harvard Medical School  
Department of Neurobiology  
USA

# WEBSITE

[www.esm-coimbra2022.cnc.uc.pt](http://www.esm-coimbra2022.cnc.uc.pt)

# SYMPOSIUM OVERVIEW

## SYMPOSIUM 1

Neuro/Synaptic Development

## SYMPOSIUM 2

Synaptic  
Function/Transmission

## SYMPOSIUM 3

Neuro-Glia Interaction

## SYMPOSIUM 4

Synaptic Circuits and  
Brain Function

## SYMPOSIUM 5

Synaptopathies



# SPONSORSHIP PACKAGES

	Gold	Silver	Bronze
Exhibition booth	large ~12 m <sup>2</sup>	medium ~8 m <sup>2</sup>	small ~4 m <sup>2</sup>
Full registrations included	3	2	1
Company Pitch Deck (3 min talk)	√	√	-
Company description on Meeting website and app	√	√	-
Company logo on website	√	√	√
Company logo in all media	√	√	√
Info material in meeting bag	√	√	√
Package Fee	2.000 €	1.000 €	500 €

## EXTRA SPONSORSHIP OPPORTUNITIES

Private Exhibition Room	Please <a href="#">contact us</a>
Lunch / Coffee Break Sponsor Special mention on all media	100 €
One email announcement to participants before the meeting	150 €
Best communication awards (2 slots available)	300 €
Meeting lanyards (provided by the sponsor)	300 €



# THE VENUE

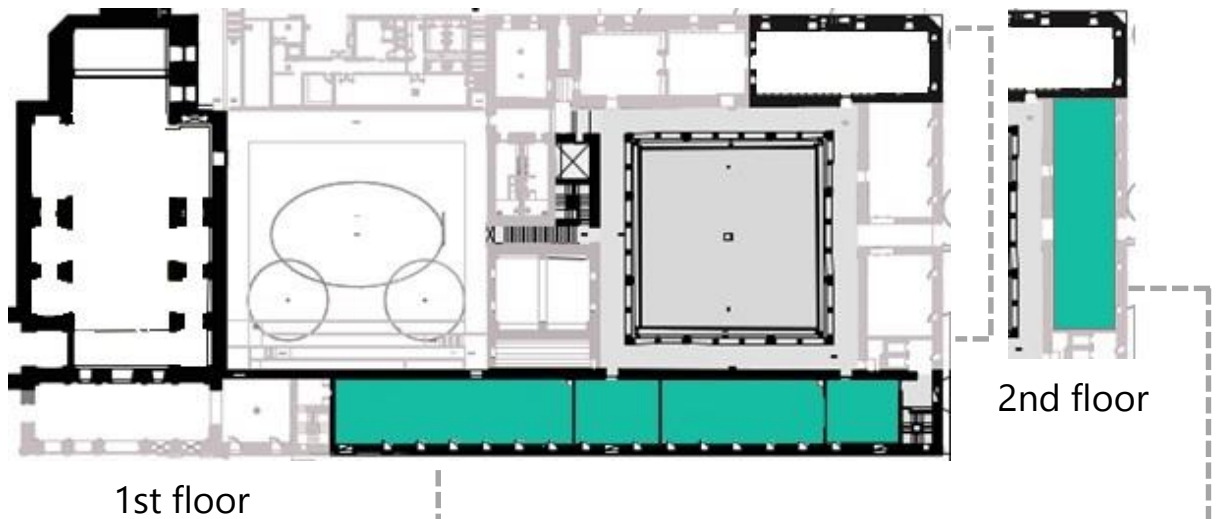
## Convento de São Francisco Coimbra, Portugal



**COIMBRA** City of the students and a World Heritage Site, Coimbra is a unique city and has great historical heritage. Here were born six kings of Portugal and the first university in the country, one of the oldest in Europe. When visiting the city you can find monuments and historical treasures, the charming Mondego river and Fado sang by the singers of the region.

**CONVENTO** The San Francisco Convent, located on the left bank of the Mondego River, dates from the beginning of the 17th century. Here you can find a completely renovated old church, beautiful cloisters, a new auditorium and several multipurpose rooms. Offering the best equipment with state-of-the-art technology, the Convento de São Francisco is an ideal operational and multifunctional space for scientific events.

# THE VENUE



Booths & Posters  
Coffee breaks & Lunch



Plenary Room

# TRAVELING TO COIMBRA

Coimbra is located in central Portugal, 120 km south of Porto, 195 km north of Lisbon. One of Portugal's biggest crossroads, Coimbra is served by multiple transportation methods.

## Airport

Those travelling from outside Portugal might wish to fly to Lisbon or Porto, although Faro could also be an option. Good train/shuttle connections to Coimbra are readily available.

## Train

Rail travel from both Lisbon and Porto is regular, fast and reliable provided you take the Alfa Pendular or Intercidades.

## Shuttle Services

Coimbra Airport Shuttle operates a door-to-door shared transfer between Lisbon (36€) / Porto (29€) airport and Coimbra.

## BUS / Taxi

Coimbra is served by the A1, the main highway of Portugal, arrival by Taxi, or BUS - Rede Expressos, is also convenient and fast.





# 8<sup>th</sup> European Synapse Meeting Coimbra | 20-21 October 2022

## CONTACT

[esm-coimbra2022@cnc.uc.pt](mailto:esm-coimbra2022@cnc.uc.pt)